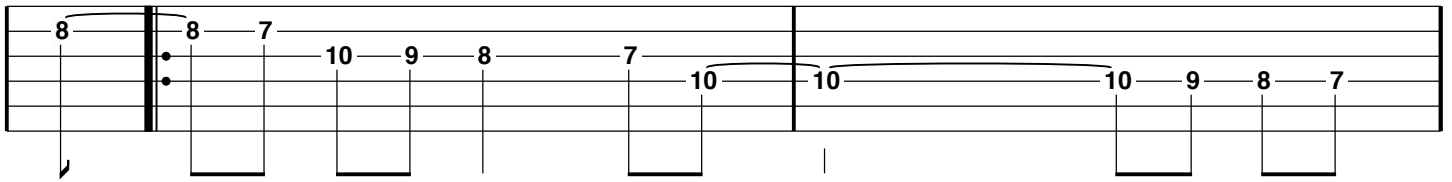


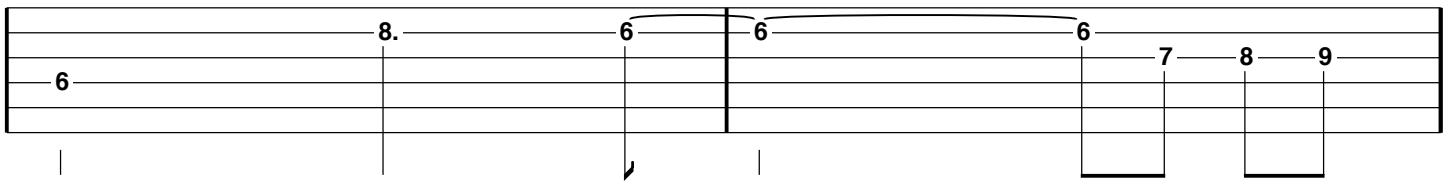
# Blue Bossa - 03

Guitare 01

Cm7

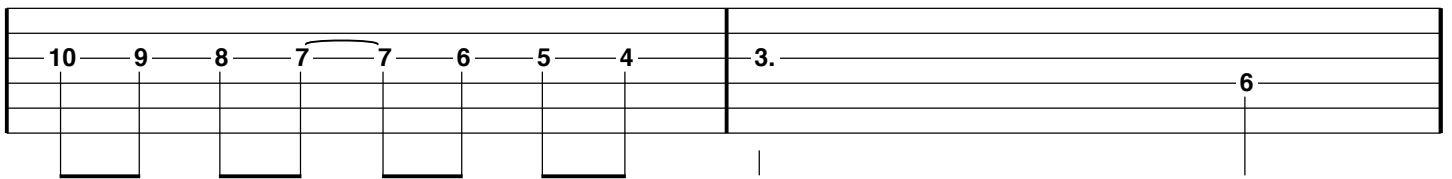


Fm7

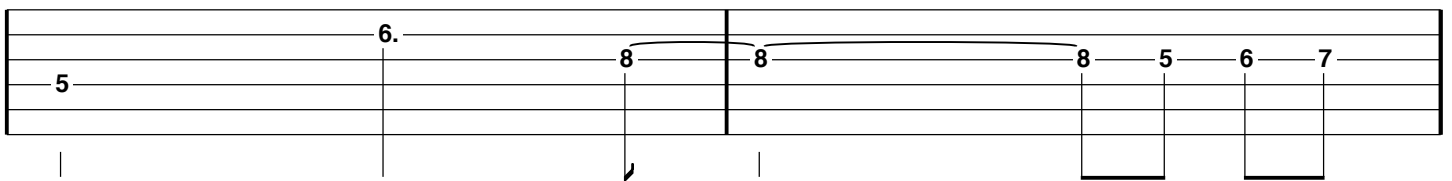


Dm7 (5b)

G7

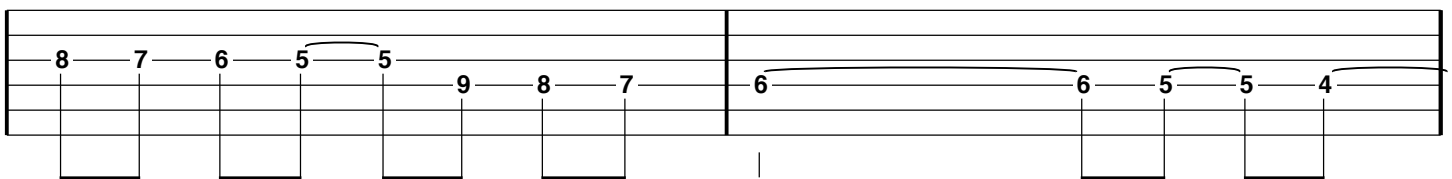


Cm7

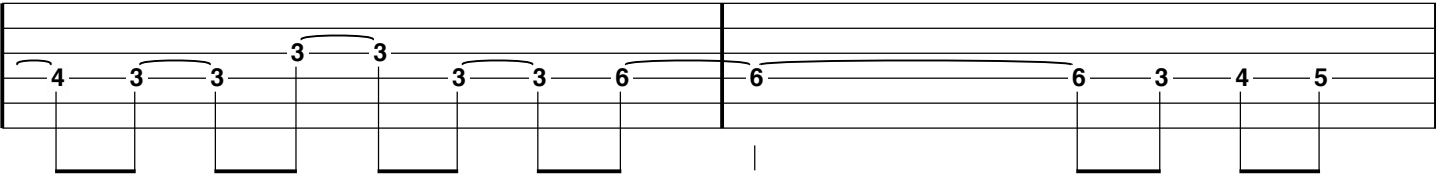


Ebm7

Ab7



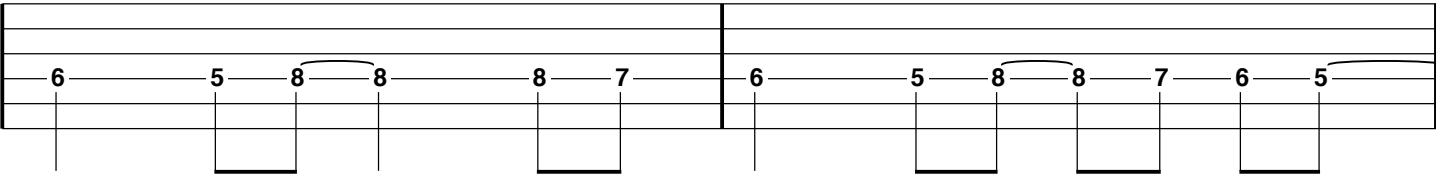
Db7M



A musical staff with two systems. The first system contains a sequence of notes: 4, 3, 3, 3, 3, 3, 3, 6. The second system contains a sequence of notes: 6, 6, 3, 4, 5. The notes are connected by horizontal lines, and there are vertical lines below the staff indicating fingerings or positions.

Dm7 (5b)

G7

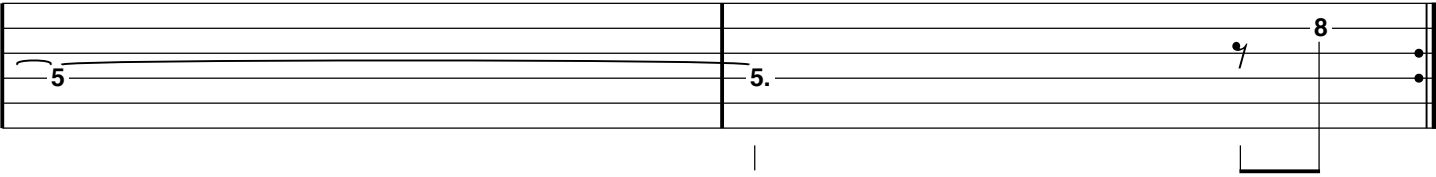


A musical staff with two systems. The first system contains a sequence of notes: 6, 5, 8, 8, 8, 7. The second system contains a sequence of notes: 6, 5, 8, 8, 7, 6, 5. The notes are connected by horizontal lines, and there are vertical lines below the staff indicating fingerings or positions.

Cm7

1. Dm7 (5b)

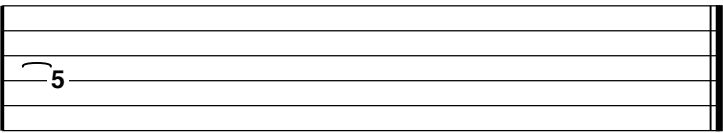
G7



A musical staff with two systems. The first system contains a sequence of notes: 5. The second system contains a sequence of notes: 5., 8. The notes are connected by horizontal lines, and there are vertical lines below the staff indicating fingerings or positions.

2. Dm7 (5b)

G7



A musical staff with two systems. The first system contains a sequence of notes: 5. The second system contains a sequence of notes: 5. The notes are connected by horizontal lines, and there are vertical lines below the staff indicating fingerings or positions.