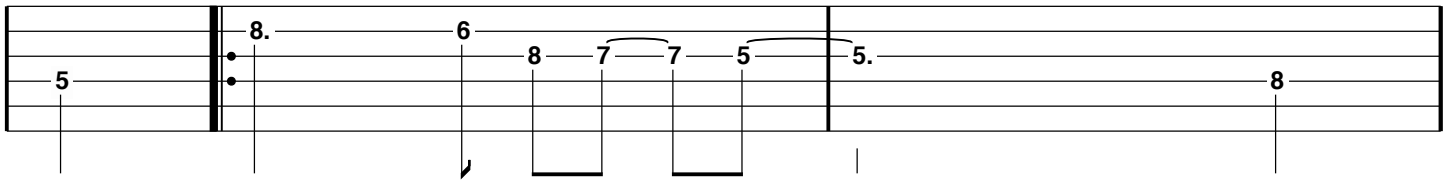


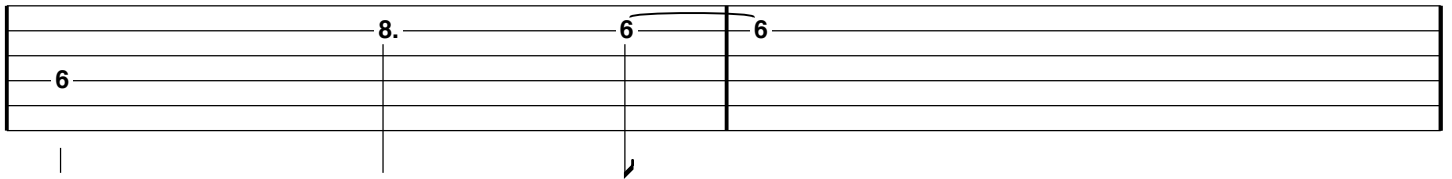
# Blue Bossa - 01

Guitare 01

**Cm7**

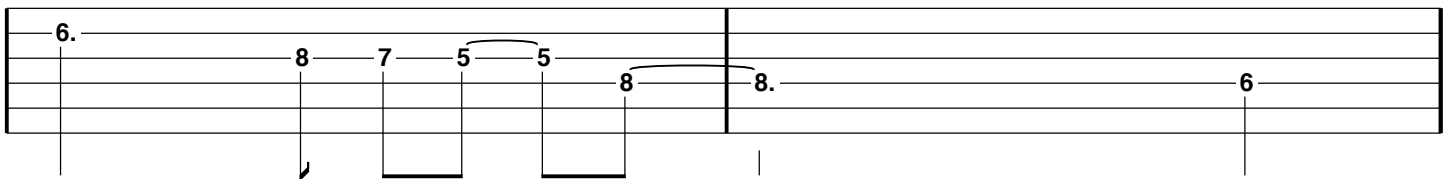


**Fm7**

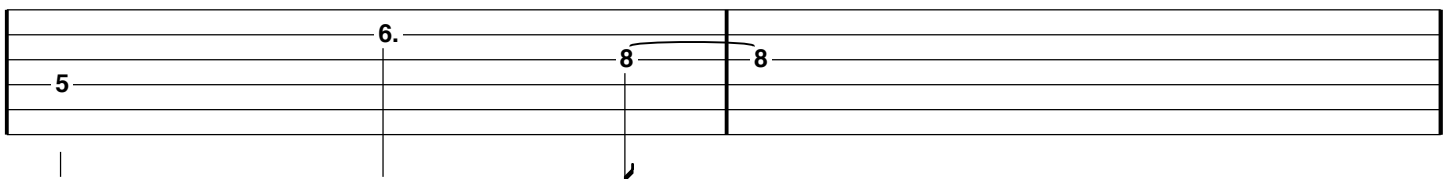


**Dm7 (5b)**

**G7**

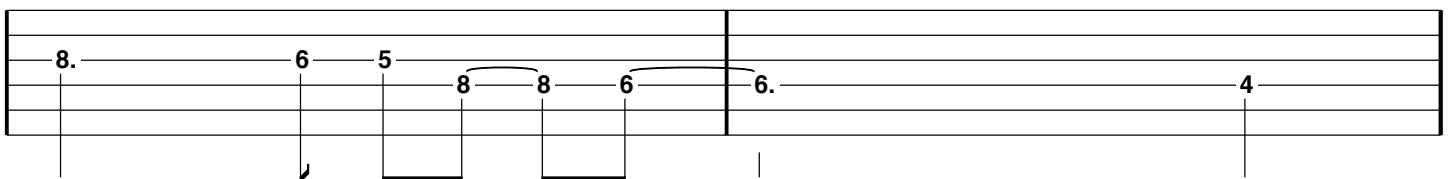


**Cm7**

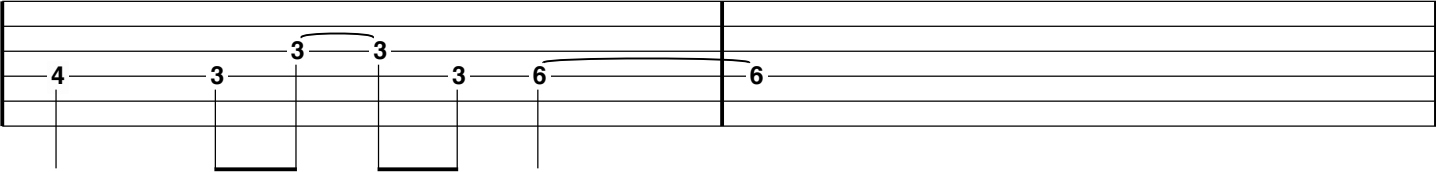


**Ebm7**

**Ab7**



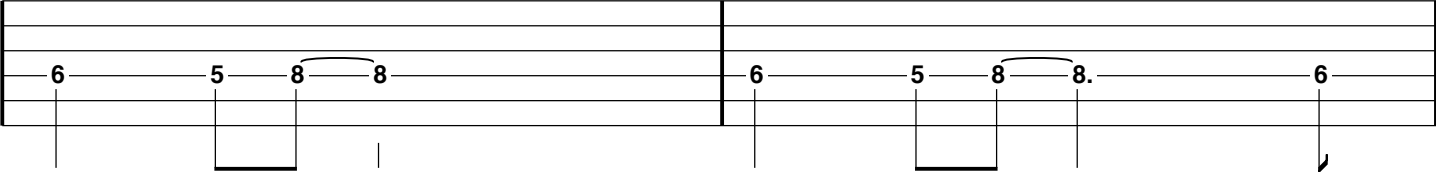
**Db7M**



A musical staff with two systems. The first system contains a sequence of notes: 4, 3, 3, 3, 3, 6, 6. The notes are connected by horizontal lines, and there are slurs over the first three 3s and the last two 6s. The second system is empty.

**Dm7 (5b)**

**G7**

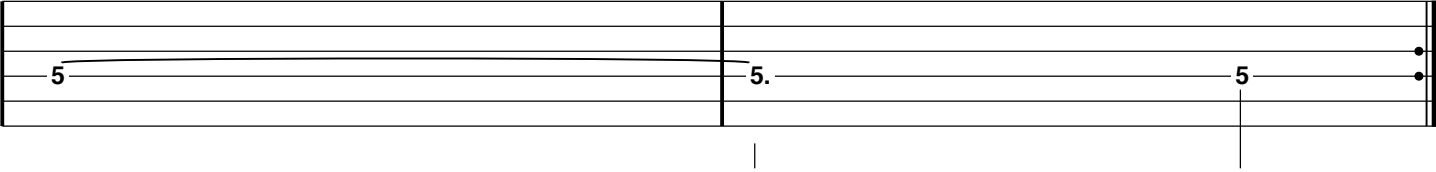


A musical staff with two systems. The first system contains a sequence of notes: 6, 5, 8, 8. The notes are connected by horizontal lines, and there is a slur over the two 8s. The second system contains a sequence of notes: 6, 5, 8, 8., 6. The notes are connected by horizontal lines, and there is a slur over the two 8s. The staff ends with a double bar line.

**Cm7**

**1. Dm7 (5b)**

**G7**

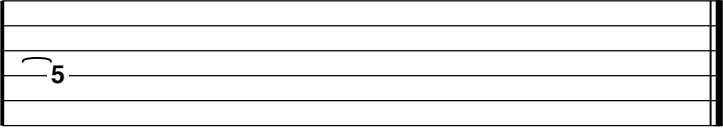


A musical staff with two systems. The first system contains a sequence of notes: 5. The notes are connected by horizontal lines. The second system contains a sequence of notes: 5., 5. The notes are connected by horizontal lines. The staff ends with a double bar line.

**2.**

**Dm7 (5b)**

**G7**



A musical staff with two systems. The first system contains a sequence of notes: 5. The notes are connected by horizontal lines. The second system is empty.