

Get Lucky - 01

Basse - Tempo = 116 BPM

Intro

Am

C

Em

D

[illegible]

Verse 1
Am

C

Em

D

The first system of the exercise consists of 15 measures. The notes and rests are as follows:

Measure	Notes
1	5
2	5
3	5
4	5
5	7
6	3
7	3
8	3
9	3
10	3
11	7
12	7
13	7
14	7
15	7

Pre-Chorus 1

Am

C

Em

D

Chorus 1
Am

C

Em

D

X3

The first staff of music is written on a single line. It begins with a treble clef and a key signature of one sharp (F#). The notation consists of several measures separated by bar lines. The notes and rests are as follows:

- Measure 1: A quarter note G4 (fingering 5), followed by a quarter rest, then a quarter note A4 (fingering 5), and a quarter note G4 (fingering 7).
- Measure 2: A quarter note F#4 (fingering 3), followed by a quarter note F#4 (fingering 3), a quarter note E4 (fingering 3), and a quarter note D4 (fingering 3).
- Measure 3: A quarter note C4 (fingering 7), followed by a quarter note C4 (fingering 7), a quarter note B3 (fingering 7), and a quarter note A3 (fingering 7).
- Measure 4: A quarter note G3 (fingering 5), followed by a quarter note G3 (fingering 5), a quarter note F#3 (fingering 5), and a quarter note E3 (fingering 5).

Interlude 1

Am

C

Em

D

The first system of the exercise consists of four measures. The notes and fingerings are as follows:

- Measure 1: 5 (finger 5), 5 (finger 5), 5 (finger 5), 5 (finger 5), 7 (finger 7).
- Measure 2: 3 (finger 3), 3 (finger 3), 3 (finger 3), 3 (finger 3), 3 (finger 3).
- Measure 3: 7 (finger 7), 7 (finger 7), 7 (finger 7), 7 (finger 7), 7 (finger 7).
- Measure 4: 5 (finger 5), 5 (finger 5), 5 (finger 5), 5 (finger 5), 5 (finger 5).

Verse 2
Am

C

Em

D

The first staff of the exercise is written on a five-line staff. It begins with a double bar line. The first measure contains two eighth notes, G4 and A4, beamed together, followed by a quarter rest. The second measure contains a quarter note G4, a quarter note F#4, and a quarter note E4, all beamed together. The third measure contains a quarter note D4, a quarter note C4, and a quarter note B3, all beamed together. The fourth measure contains a quarter note A3, a quarter note G3, and a quarter note F3, all beamed together. The fifth measure contains a quarter note E3, a quarter note D3, and a quarter note C3, all beamed together. The sixth measure contains a quarter note B2, a quarter note A2, and a quarter note G2, all beamed together. The seventh measure contains a quarter note F2, a quarter note E2, and a quarter note D2, all beamed together. The eighth measure contains a quarter note C2, a quarter note B1, and a quarter note A1, all beamed together. The staff ends with a double bar line.

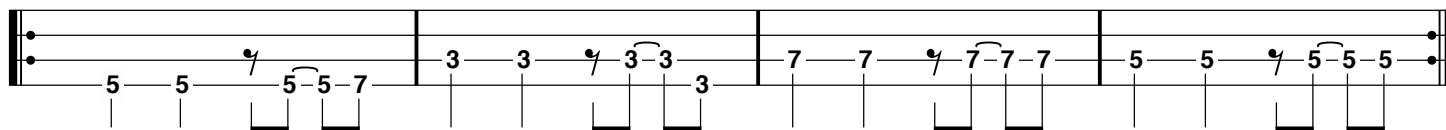
Pre-Chorus 2

Am

C

Em

D



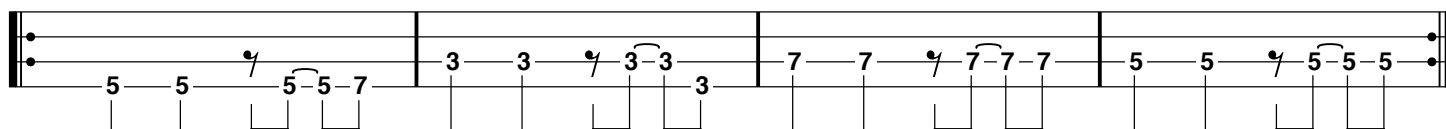
Chorus 2

Am

C

Em

D



Outro

Am

C

Em

D

