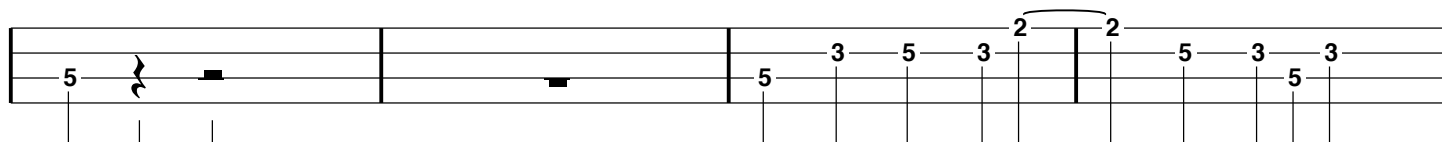
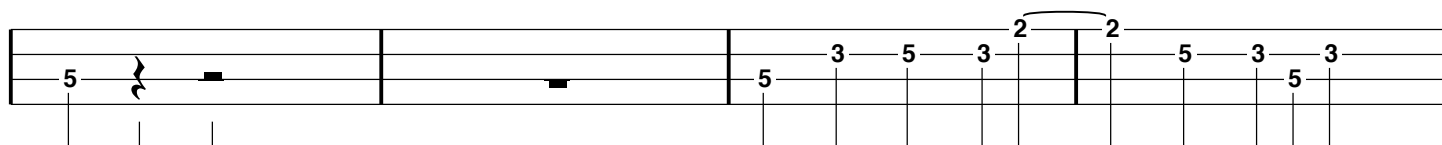
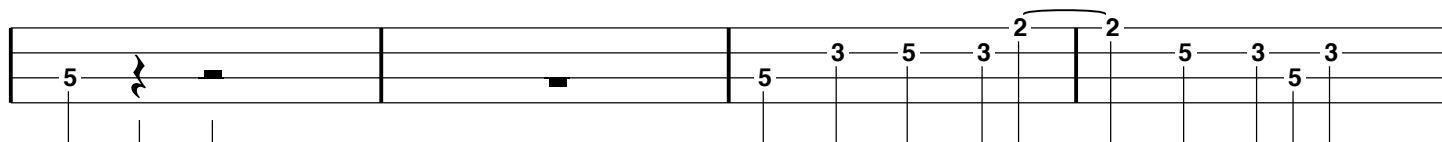
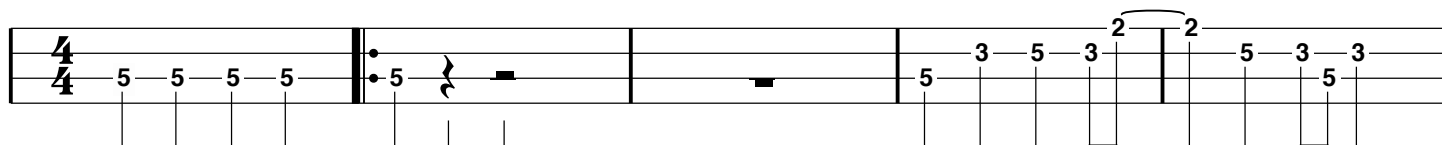


# Happy

Basse - Tempo 120 BPM

Intro  
D7

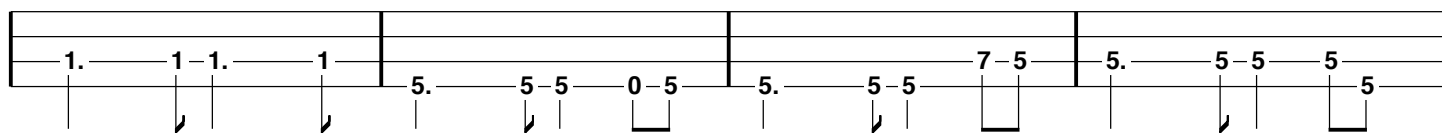
Verse 01 et 02  
D7



Chorus 1 et 2  
Bbm7

Am7

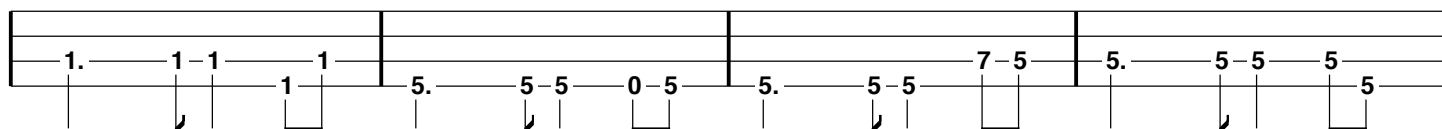
D7



Bbm7

Am7

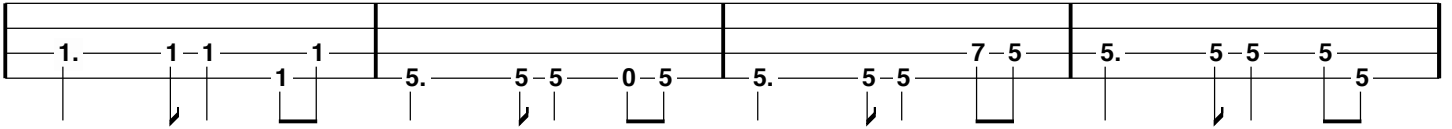
D7



**Bbm7**

**Am7**

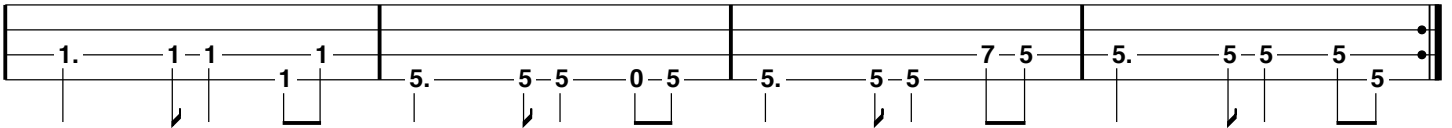
**D7**



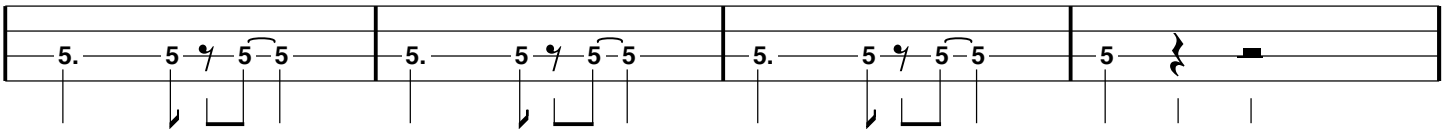
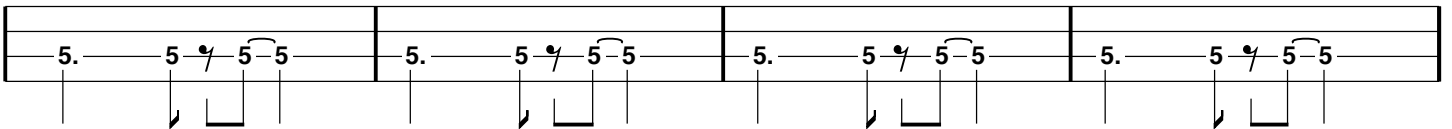
**Bbm7**

**Am7**

**D7**



**Bridge**

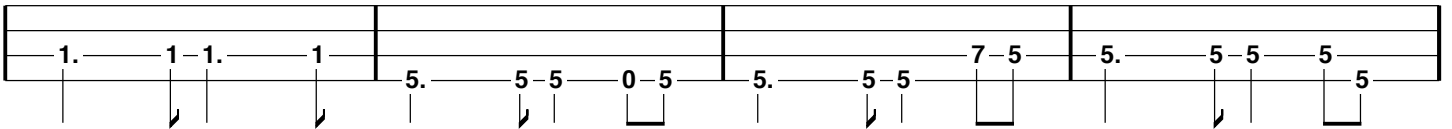


**Chorus 03**

**Bbm7**

**Am7**

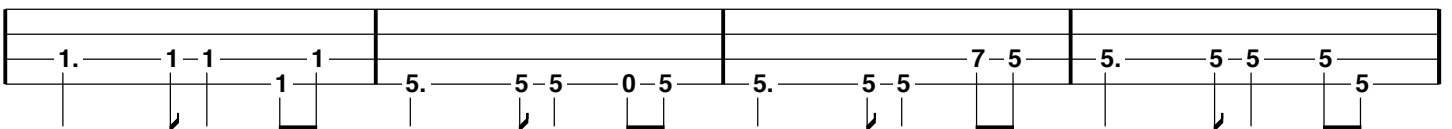
**D7**



**Bbm7**

**Am7**

**D7**



**Bbm7**

**Am7**

**D7**

First staff of guitar notation. It consists of four measures. The first measure is under the Bbm7 chord and contains a sequence of notes: 1. (quarter), 1-1 (eighth), 1 (quarter), and 1 (quarter). The second measure is under the Am7 chord and contains: 5. (quarter), 5-5 (eighth), 0-5 (eighth), and 5 (quarter). The third measure is under the D7 chord and contains: 5. (quarter), 5-5 (eighth), 7-5 (eighth), and 5 (quarter). The fourth measure is under the D7 chord and contains: 5. (quarter), 5-5 (eighth), 5 (quarter), and 5 (quarter). Fingering is indicated by numbers 1-5 below the notes. Slurs connect the eighth notes in each measure.

**Bbm7**

**Am7**

**D7**

Second staff of guitar notation. It consists of four measures. The first measure is under the Bbm7 chord and contains: 1. (quarter), 1-1 (eighth), 1 (quarter), and 1 (quarter). The second measure is under the Am7 chord and contains: 5. (quarter), 5-5 (eighth), 0-5 (eighth), and 5 (quarter). The third measure is under the D7 chord and contains: 5. (quarter), 5-5 (eighth), 7-5 (eighth), and 5 (quarter). The fourth measure is under the D7 chord and contains: 5. (quarter), 5-5 (eighth), 5 (quarter), and 7 (quarter). Fingering is indicated by numbers 1-5 below the notes. Slurs connect the eighth notes in each measure.

**Outro**  
**D5**

Outro staff of guitar notation. It consists of a single measure under the D5 chord. The measure contains: 5-5 (eighth), a quarter rest, and a quarter rest. Fingering is indicated by numbers 5 below the notes.