

Quintessence de l'art de Miles Davis - Solo de Tutu

Basse Solo - A jouer binaire ou ternaire

Gm7

First staff of music: A two-line staff with a treble clef. The first measure contains a quarter note 'Fa' on the first line, followed by a quarter rest, then a quarter note 'Ré' on the second line, and another quarter rest. The second measure contains a quarter note 'Ré' on the second line, followed by a quarter rest, then a quarter note 'Fa' on the first line, and another quarter rest. The third measure contains a quarter note 'Fa' on the first line, followed by a quarter rest, then a quarter note 'Ré' on the second line, and another quarter rest. The fourth measure contains a quarter note 'Ré' on the second line, followed by a quarter rest, then a quarter note 'Ré' on the second line, and another quarter rest. Vertical lines connect the notes to the staff lines.

Second staff of music: A two-line staff with a treble clef. The first measure contains a quarter note 'Ré' on the second line, followed by a quarter rest, then a quarter note 'Fa' on the first line, and another quarter rest. The second measure contains a quarter note 'Fa' on the first line, followed by a quarter rest, then a quarter note 'Fa' on the first line, and another quarter rest. The third measure contains a quarter note 'Fa' on the first line, followed by a quarter rest, then a quarter note 'Sib' on the first space, and another quarter rest. The fourth measure contains a quarter note 'Sol' on the first space, followed by a quarter rest, then a quarter note 'Réb' on the second line, and another quarter rest. The fifth measure contains a quarter note 'Réb' on the second line, followed by a quarter rest, then a quarter note 'Réb' on the second line, and another quarter rest. Vertical lines connect the notes to the staff lines.

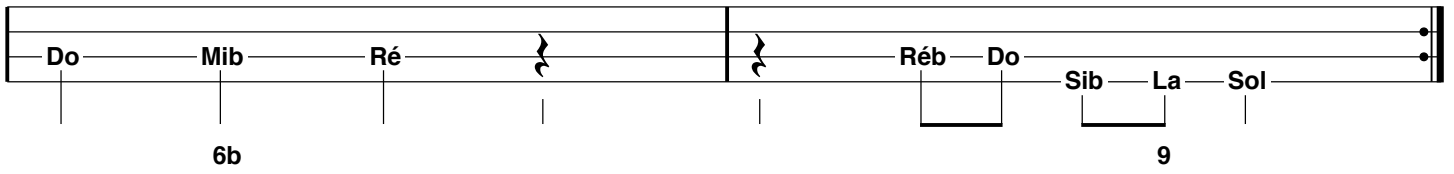
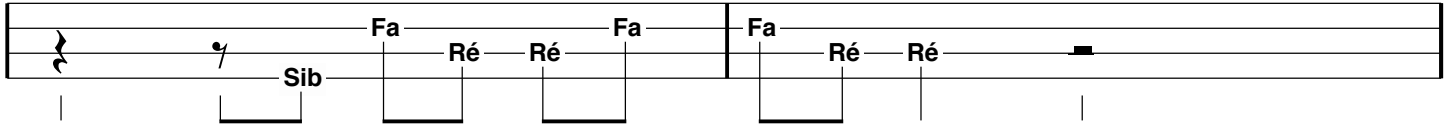
Third staff of music: A two-line staff with a treble clef. The first measure contains a quarter rest, followed by a quarter rest, then a quarter note 'Fa' on the first line, and another quarter rest. The second measure contains a quarter note 'Ré' on the second line, followed by a quarter rest, then a quarter note 'Ré' on the second line, and another quarter rest. The third measure contains a quarter note 'Fa' on the first line, followed by a quarter rest, then a quarter note 'Ré' on the second line, and another quarter rest. The fourth measure contains a quarter note 'Ré' on the second line, followed by a quarter rest, then a quarter note 'Ré' on the second line, and another quarter rest. Vertical lines connect the notes to the staff lines.

Fourth staff of music: A two-line staff with a treble clef. The first measure contains a quarter rest, followed by a quarter rest, then a quarter note 'Mib' on the first space, and another quarter rest. The second measure contains a quarter note 'Ré' on the second line, followed by a quarter rest, then a quarter note 'Do' on the first space, and another quarter rest. The third measure contains a quarter note 'Sol' on the first space, followed by a quarter rest, then a quarter note 'Sol' on the first space, and another quarter rest. The fourth measure contains a quarter note 'Sol' on the first space, followed by a quarter rest, then a quarter note 'Do' on the first space, and another quarter rest. The fifth measure contains a quarter note 'Do' on the first space, followed by a quarter rest, then a quarter note 'Do' on the first space, and another quarter rest. Vertical lines connect the notes to the staff lines.

6b

Fifth staff of music: A two-line staff with a treble clef. The first measure contains a quarter rest, followed by a quarter rest, then a quarter note 'Sib' on the first space, and another quarter rest. The second measure contains a quarter note 'Fa' on the first line, followed by a quarter rest, then a quarter note 'Ré' on the second line, and another quarter rest. The third measure contains a quarter note 'Ré' on the second line, followed by a quarter rest, then a quarter note 'Fa' on the first line, and another quarter rest. The fourth measure contains a quarter note 'Fa' on the first line, followed by a quarter rest, then a quarter note 'Ré' on the second line, and another quarter rest. The fifth measure contains a quarter note 'Ré' on the second line, followed by a quarter rest, then a quarter note 'Ré' on the second line, and another quarter rest. Vertical lines connect the notes to the staff lines.

Sixth staff of music: A two-line staff with a treble clef. The first measure contains a quarter rest, followed by a quarter rest, then a quarter note 'Ré' on the second line, and another quarter rest. The second measure contains a quarter note 'Ré' on the second line, followed by a quarter rest, then a quarter note 'Ré' on the second line, and another quarter rest. The third measure contains a quarter note 'Ré' on the second line, followed by a quarter rest, then a quarter note 'Ré' on the second line, and another quarter rest. The fourth measure contains a quarter note 'Fa' on the first line, followed by a quarter rest, then a quarter note 'Sib' on the first space, and another quarter rest. The fifth measure contains a quarter note 'Sol' on the first space, followed by a quarter rest, then a quarter note 'Sol' on the first space, and another quarter rest. Vertical lines connect the notes to the staff lines.



Gamme utilisée

Sol Mineur Blues Sol Sib Do Réb Ré Fa

+ note Mib et La