

# Pop Rock

Batterie

## Pop Rock 01

HH

Musical notation for Hi-Hat (HH) part of Pop Rock 01. It consists of a single staff with a treble clef and a key signature of one sharp (F#). The notation shows four measures, each containing a pair of eighth notes beamed together, with an 'x' above each note. The notes are on the second line of the staff (D4).

HH + SD

Musical notation for Hi-Hat (HH) + Snare Drum (SD) part of Pop Rock 01. It consists of a single staff with a treble clef and a key signature of one sharp (F#). The notation shows four measures. Each measure contains a pair of eighth notes beamed together with an 'x' above each note (HH), and a single eighth note on the second line of the staff (D4) (SD) in the second and fourth measures.

HH + BD

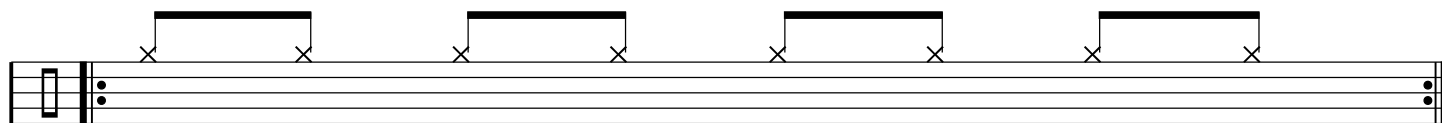
Musical notation for Hi-Hat (HH) + Bass Drum (BD) part of Pop Rock 01. It consists of a single staff with a treble clef and a key signature of one sharp (F#). The notation shows four measures. Each measure contains a pair of eighth notes beamed together with an 'x' above each note (HH), and a single eighth note on the first space of the staff (G3) (BD) in the first and third measures.

HH + SD + BD

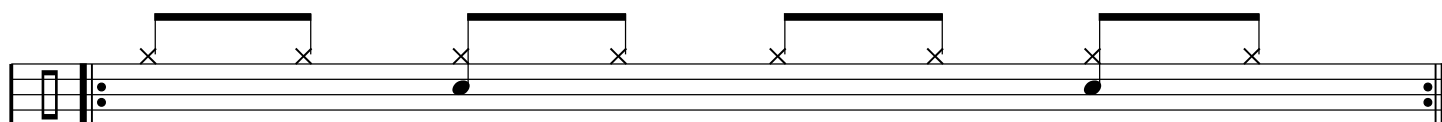
Musical notation for Hi-Hat (HH) + Snare Drum (SD) + Bass Drum (BD) part of Pop Rock 01. It consists of a single staff with a treble clef and a key signature of one sharp (F#). The notation shows four measures. Each measure contains a pair of eighth notes beamed together with an 'x' above each note (HH), a single eighth note on the second line of the staff (D4) (SD) in the second and fourth measures, and a single eighth note on the first space of the staff (G3) (BD) in the first and third measures.

**Pop Rock 02**

**HH**



**HH + SD**



**HH + BD**



**HH + SD + BD**



Pop Rock 03

HH

Musical notation for Hi-Hat (HH) pattern. It consists of a single staff with a treble clef and a key signature of one flat. The notation shows four measures, each containing a pair of eighth notes beamed together, with an 'x' above each note. A bracket spans both notes in each measure. The first measure has a key signature change symbol (two flats) at the beginning.

HH + SD

Musical notation for Hi-Hat (HH) + Snare Drum (SD) pattern. It consists of a single staff with a treble clef and a key signature of one flat. The notation shows four measures, each containing a pair of eighth notes beamed together, with an 'x' above each note. A bracket spans both notes in each measure. The first measure has a key signature change symbol (two flats) at the beginning. In the second and fourth measures, there is a solid black dot on the second line of the staff, representing a snare drum hit.

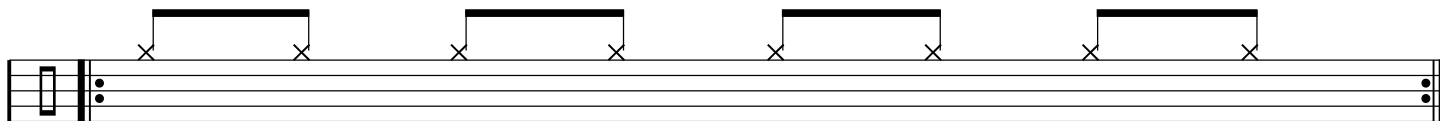
HH + BD

Musical notation for Hi-Hat (HH) + Bass Drum (BD) pattern. It consists of a single staff with a treble clef and a key signature of one flat. The notation shows four measures, each containing a pair of eighth notes beamed together, with an 'x' above each note. A bracket spans both notes in each measure. The first measure has a key signature change symbol (two flats) at the beginning. In the first, second, third, and fourth measures, there is a solid black dot on the first space of the staff, representing a bass drum hit.

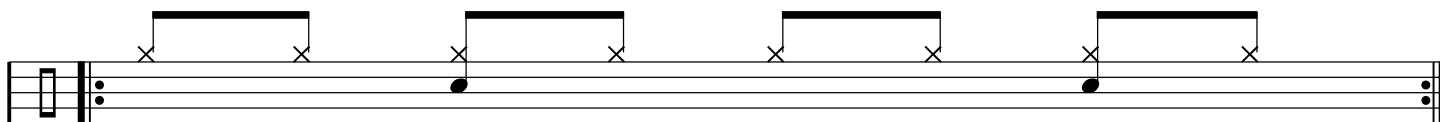
HH + SD + BD

Musical notation for Hi-Hat (HH) + Snare Drum (SD) + Bass Drum (BD) pattern. It consists of a single staff with a treble clef and a key signature of one flat. The notation shows four measures, each containing a pair of eighth notes beamed together, with an 'x' above each note. A bracket spans both notes in each measure. The first measure has a key signature change symbol (two flats) at the beginning. In the second and fourth measures, there is a solid black dot on the second line of the staff (snare drum) and a solid black dot on the first space of the staff (bass drum).

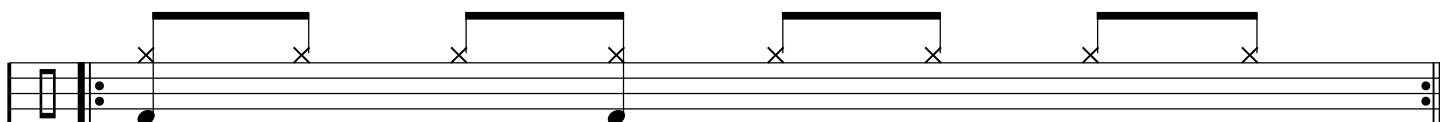
**Pop Rock 04**  
**HH + SD**



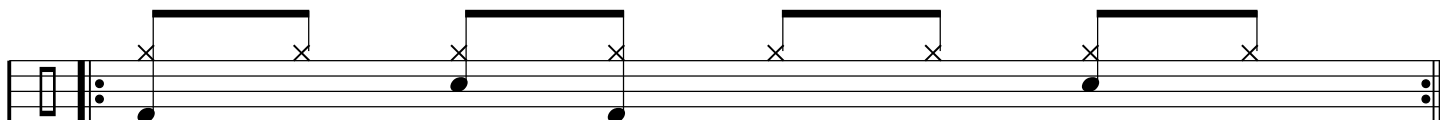
**HH + SD**



**HH + BD**



**HH + SD + BD**



Pop Rock 05

HH

A musical staff with a treble clef and a key signature of one sharp (F#). The staff contains four measures of music. Each measure consists of a half note followed by a half note, with a bracket above the notes. The notes are on the second and fourth lines of the staff. There are 'x' marks above each note, indicating a specific drum sound.

HH + SD

A musical staff with a treble clef and a key signature of one sharp (F#). The staff contains four measures of music. Each measure consists of a half note followed by a half note, with a bracket above the notes. The notes are on the second and fourth lines of the staff. There are 'x' marks above each note, indicating a specific drum sound. The first and third measures have a solid black dot on the first line of the staff, indicating a snare drum sound.

HH + BD

A musical staff with a treble clef and a key signature of one sharp (F#). The staff contains four measures of music. Each measure consists of a half note followed by a half note, with a bracket above the notes. The notes are on the second and fourth lines of the staff. There are 'x' marks above each note, indicating a specific drum sound. The first, second, and third measures have a solid black dot on the first line of the staff, indicating a snare drum sound.

HH + SD + BD

A musical staff with a treble clef and a key signature of one sharp (F#). The staff contains four measures of music. Each measure consists of a half note followed by a half note, with a bracket above the notes. The notes are on the second and fourth lines of the staff. There are 'x' marks above each note, indicating a specific drum sound. The first, second, and third measures have a solid black dot on the first line of the staff, indicating a snare drum sound. The fourth measure has a solid black dot on the second line of the staff, indicating a bass drum sound.

