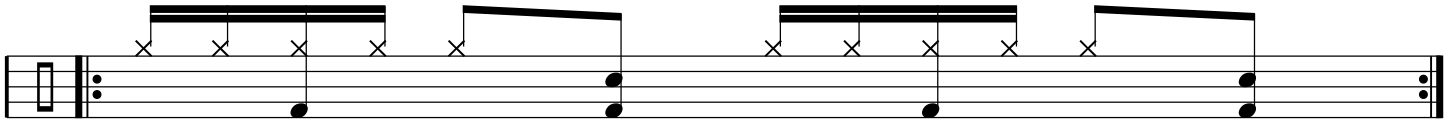


South Africa - HH - SD - BD

Basse sur les contre-temps

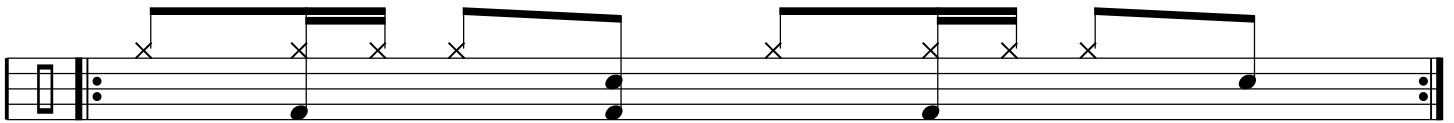
Ex 1

D G D G D G



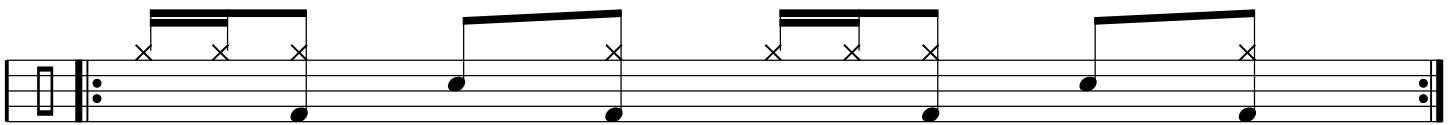
Ex 2

D D G D G



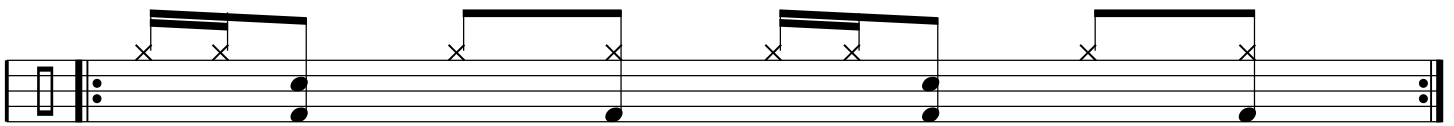
Ex 3

D G D D G



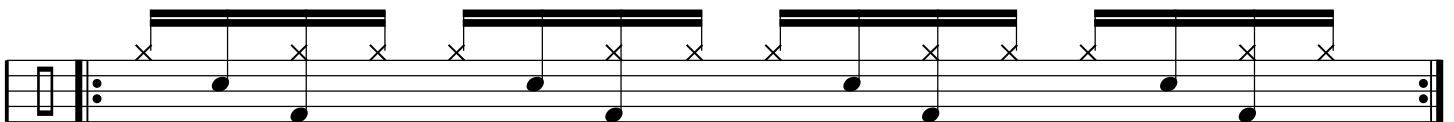
Ex 4

D G D D G



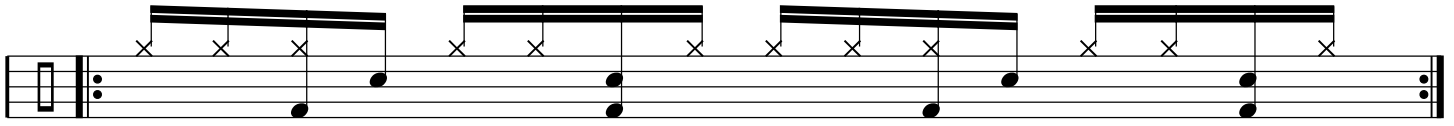
Ex 5

G D G D



Ex 6

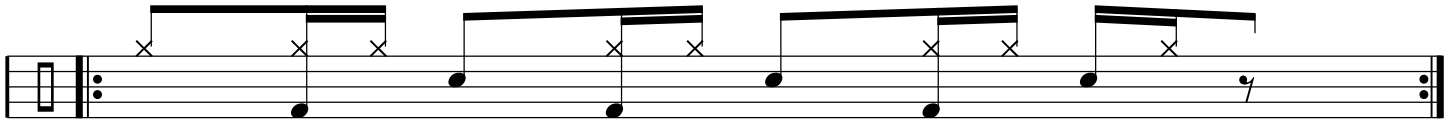
D G D G



Musical notation for Exercise 6, showing a sequence of four chords: D, G, D, G. Each chord is represented by a horizontal bar with 'x' marks indicating fretted strings. The notes are placed on a five-line staff with a treble clef and a key signature of one sharp (F#).

Ex 7

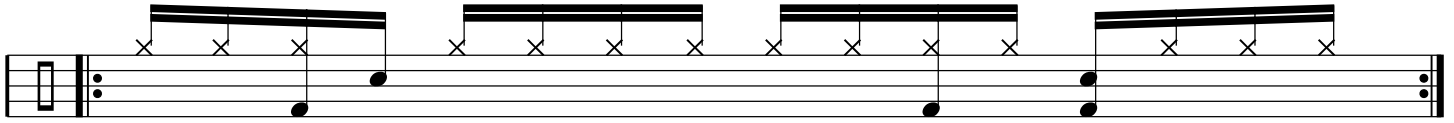
D D G D D G D D G D G



Musical notation for Exercise 7, showing a sequence of chords: D, D, G, D, D, G, D, D, G, D, G. Each chord is represented by a horizontal bar with 'x' marks indicating fretted strings. The notes are placed on a five-line staff with a treble clef and a key signature of one sharp (F#).

Ex 8

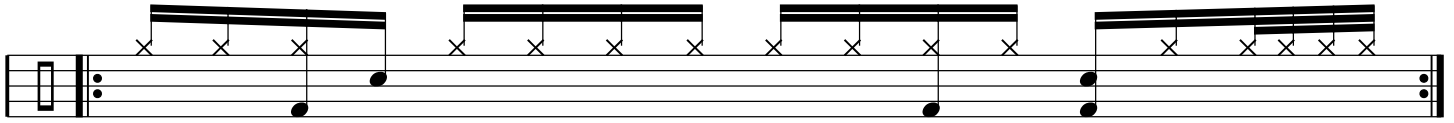
D G D G



Musical notation for Exercise 8, showing a sequence of four chords: D, G, D, G. Each chord is represented by a horizontal bar with 'x' marks indicating fretted strings. The notes are placed on a five-line staff with a treble clef and a key signature of one sharp (F#).

Ex 9

D G D G D G D D G G



Musical notation for Exercise 9, showing a sequence of chords: D, G, D, G, D, G, D, D, G, G. Each chord is represented by a horizontal bar with 'x' marks indicating fretted strings. The notes are placed on a five-line staff with a treble clef and a key signature of one sharp (F#).