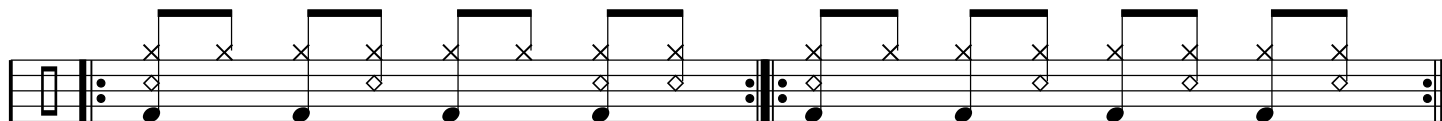
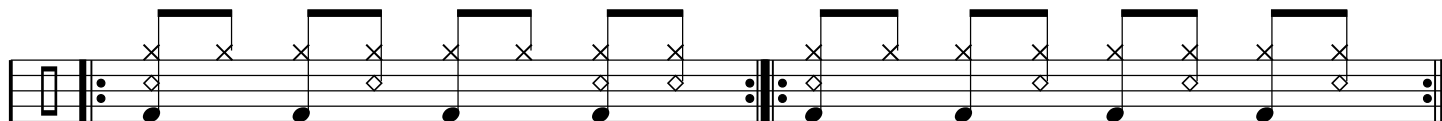


Roots Reggae Drum Grooves - Four Drop - 03

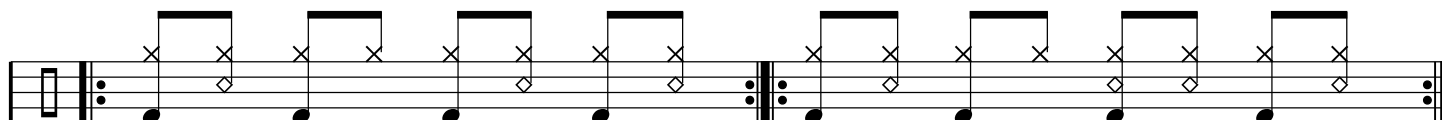
Ex 1



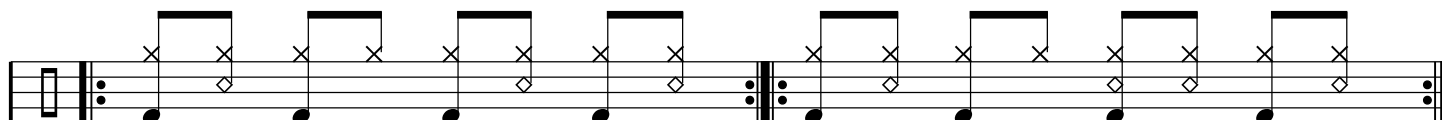
Ex 2



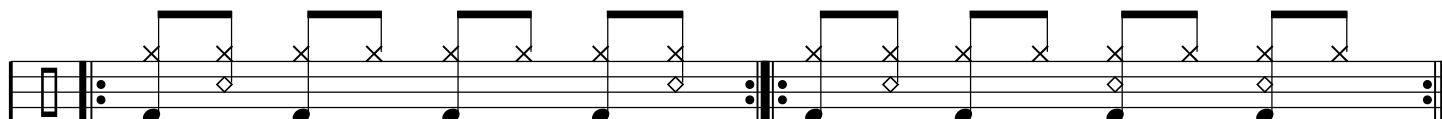
Ex 3



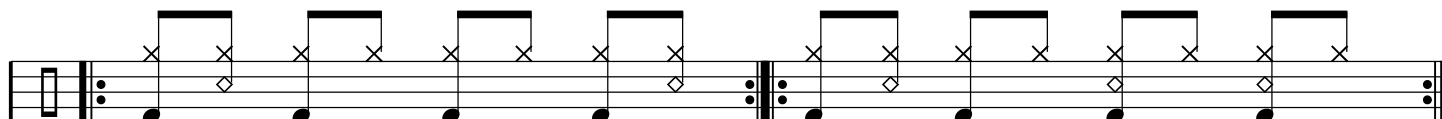
Ex 4



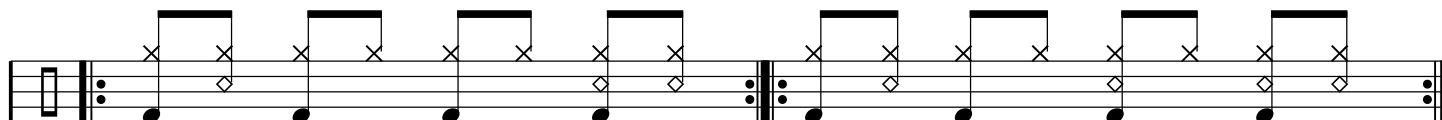
Ex 5



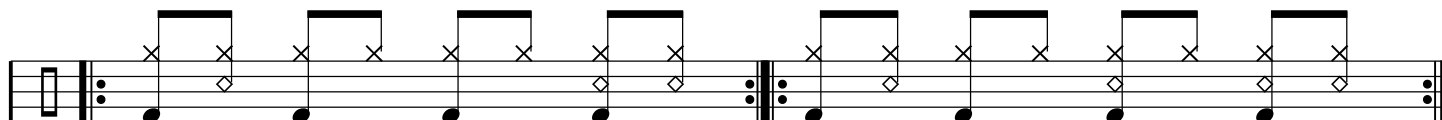
Ex 6



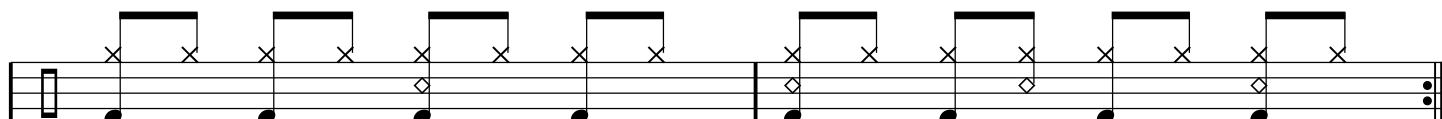
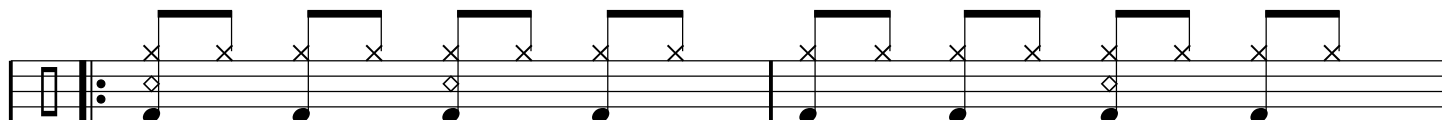
Ex 7



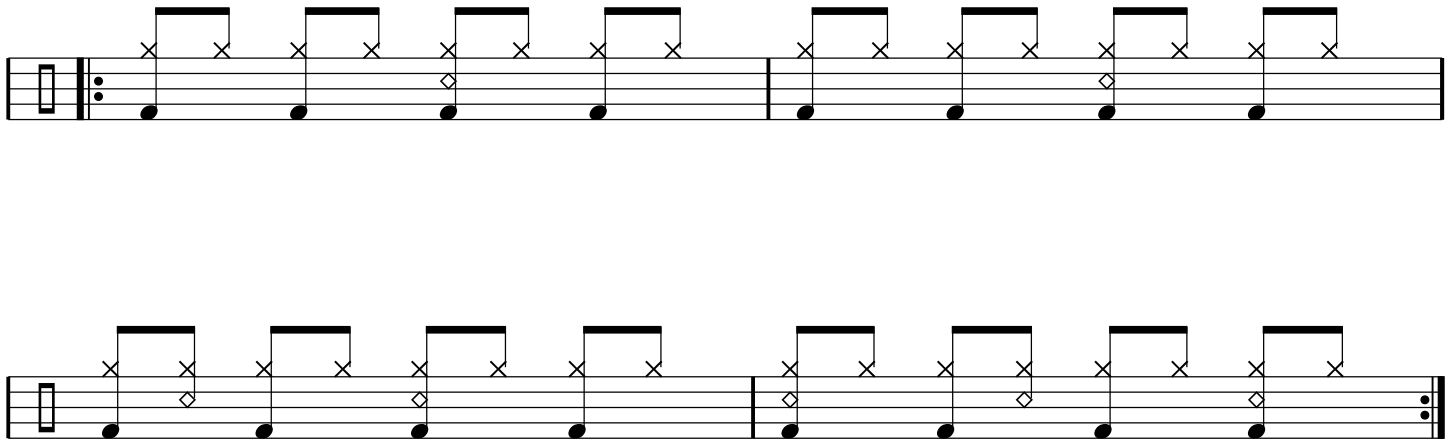
Ex 8



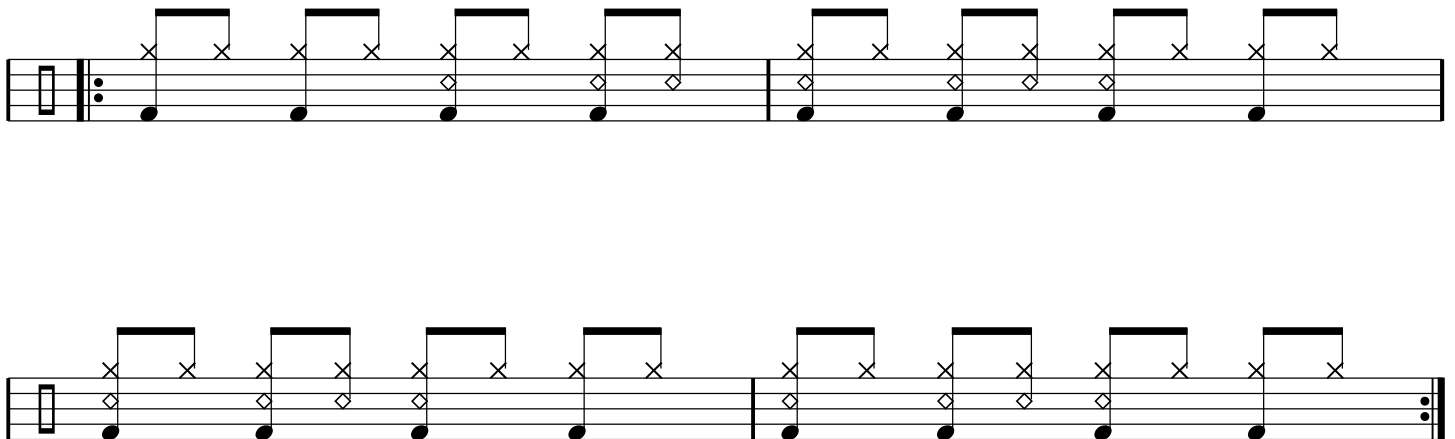
Ex 9



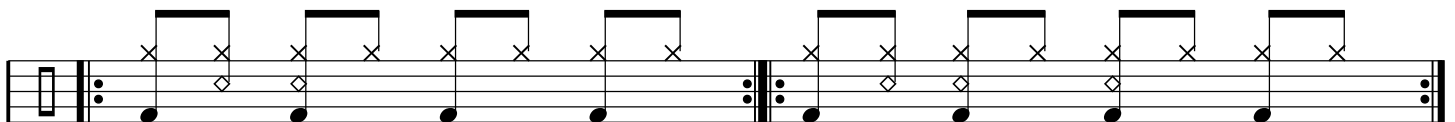
Ex 10



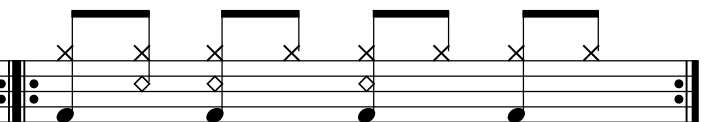
Ex 11



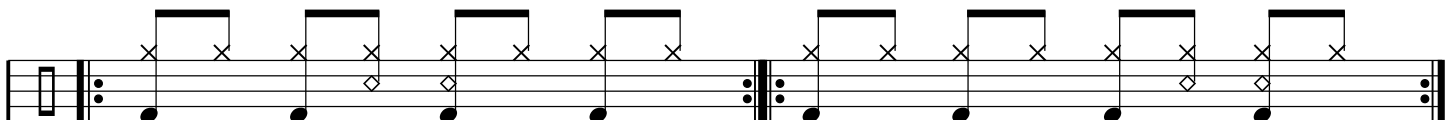
Ex 12



Ex 13



Ex 14

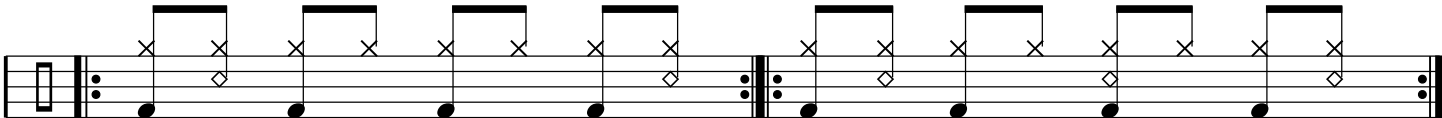


Ex 15



Ex 16

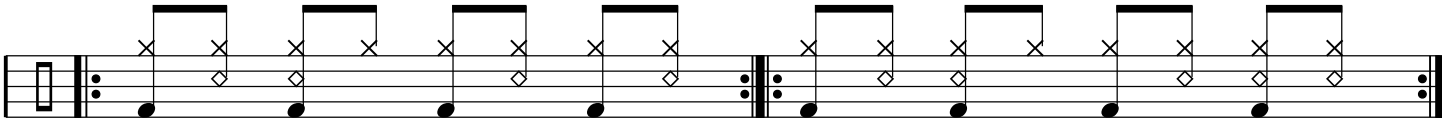
Ex 17



Ex 16 and Ex 17 are musical notations for drum grooves. Each example consists of a single staff with a key signature of one flat (Bb) and a common time signature (C). The notation uses 'x' marks to indicate specific drum hits. In Ex 16, the 'x' marks are placed on the first and second lines of the staff, representing the snare and tenor drums. In Ex 17, the 'x' marks are placed on the first and second lines of the staff, representing the snare and tenor drums. The notation is divided into two measures by a double bar line.

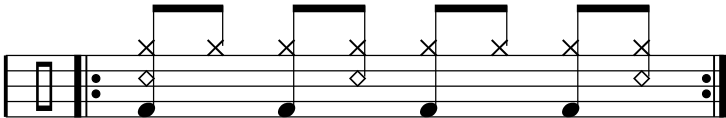
Ex 18

Ex 19



Ex 18 and Ex 19 are musical notations for drum grooves. Each example consists of a single staff with a key signature of one flat (Bb) and a common time signature (C). The notation uses 'x' marks to indicate specific drum hits. In Ex 18, the 'x' marks are placed on the first and second lines of the staff, representing the snare and tenor drums. In Ex 19, the 'x' marks are placed on the first and second lines of the staff, representing the snare and tenor drums. The notation is divided into two measures by a double bar line.

Ex 20



Ex 20 is a musical notation for a drum groove. It consists of a single staff with a key signature of one flat (Bb) and a common time signature (C). The notation uses 'x' marks to indicate specific drum hits. The 'x' marks are placed on the first and second lines of the staff, representing the snare and tenor drums. The notation is divided into two measures by a double bar line.