

Blues 12 Bars + Turnaround

Fondamentale 6ème corde
C7

Accords 7 à 4 sons

8	8	8	8
9	9	9	9
8	8	8	8
8	8	8	8

F7

C7

1	1	8	8
2	2	9	9
1	1	8	8
1	1	8	8

G7

F7

C7

G7

3	1	8	3
4	2	9	4
3	1	8	3
3	1	8	3

Fondamentale 5ème corde
C7

1	1	1	1
3	3	3	3
2	2	2	2
3	3	3	3

F7

C7

6	6	1	1
8	8	3	3
7	7	2	2
8	8	3	3

G7

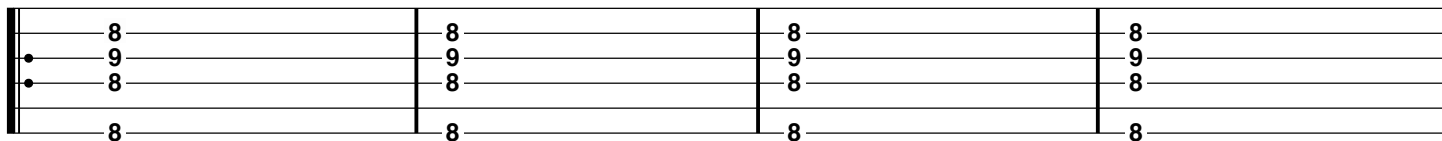
F7

C7

G7

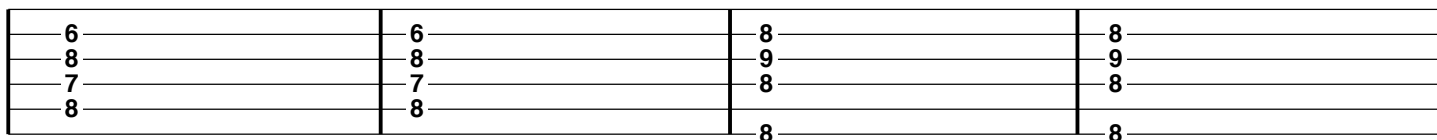
8	6	1	8
10	8	3	10
9	7	2	9
10	8	3	10

Fondamentale 6ème et 5ème corde
C7



F7

C7

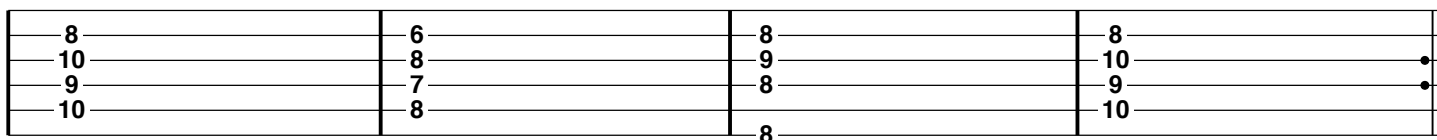


G7

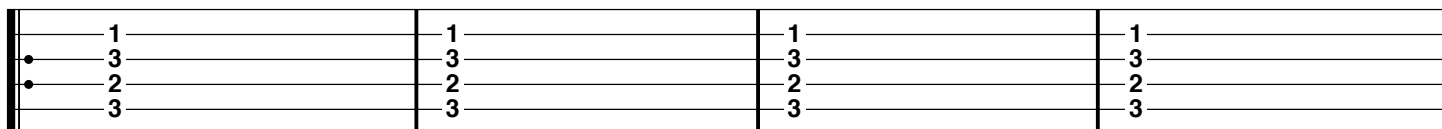
F7

C7

G7

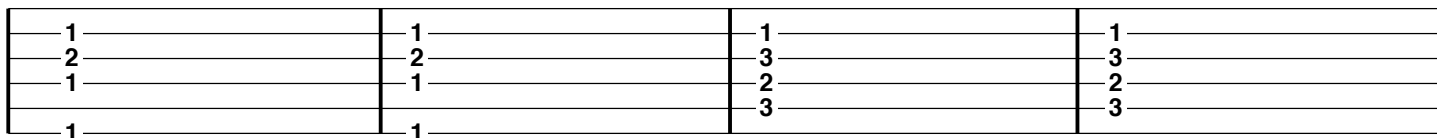


Fondamentale 5ème et 6ème corde
C7



F7

C7



G7

F7

C7

G7

