

# Afro-Clave in Six 01 - Deux Mains


Version en 6/8

Ex 1



Musical notation for Exercise 1, a single staff in 6/8 time. The notation includes a key signature of one flat (B-flat) and a common time signature of 6/8. The exercise consists of two measures. The first measure contains a quarter note on G4, a quarter note on A4, a quarter note on B4, and a quarter note on C5. The second measure contains a quarter note on G4, a quarter note on A4, a quarter note on B4, and a quarter note on C5. Above the notes are vertical stems with an 'x' mark, indicating the hand used to play each note.

Ex 2



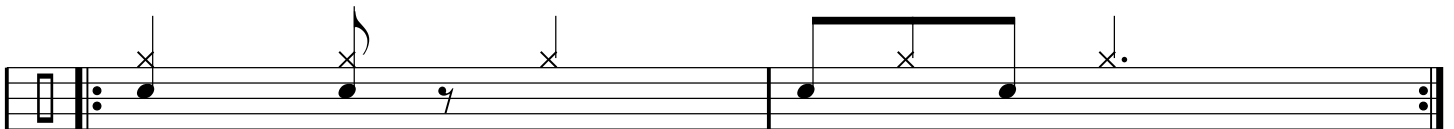
Musical notation for Exercise 2, a single staff in 6/8 time. The notation includes a key signature of one flat (B-flat) and a common time signature of 6/8. The exercise consists of two measures. The first measure contains a quarter note on G4, a quarter note on A4, a quarter note on B4, and a quarter note on C5. The second measure contains a quarter note on G4, a quarter note on A4, a quarter note on B4, and a quarter note on C5. Above the notes are vertical stems with an 'x' mark, indicating the hand used to play each note.

Ex 3



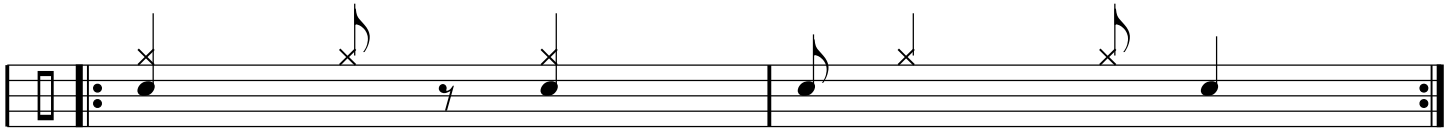
Musical notation for Exercise 3, a single staff in 6/8 time. The notation includes a key signature of one flat (B-flat) and a common time signature of 6/8. The exercise consists of two measures. The first measure contains a quarter note on G4, a quarter note on A4, a quarter note on B4, and a quarter note on C5. The second measure contains a quarter note on G4, a quarter note on A4, a quarter note on B4, and a quarter note on C5. Above the notes are vertical stems with an 'x' mark, indicating the hand used to play each note.

Ex 4

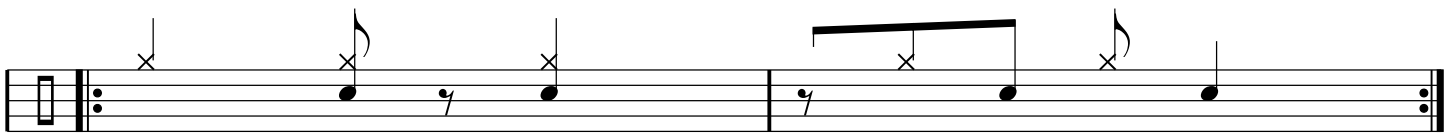


Musical notation for Exercise 4, a single staff in 6/8 time. The notation includes a key signature of one flat (B-flat) and a common time signature of 6/8. The exercise consists of two measures. The first measure contains a quarter note on G4, a quarter note on A4, a quarter note on B4, and a quarter note on C5. The second measure contains a quarter note on G4, a quarter note on A4, a quarter note on B4, and a quarter note on C5. Above the notes are vertical stems with an 'x' mark, indicating the hand used to play each note.

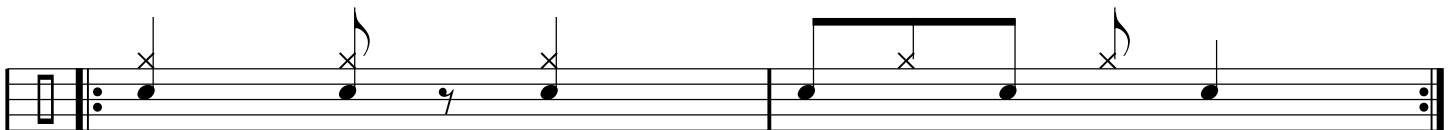
Ex 5



Ex 6



Ex 7



Jouez la clave (rythme supérieur) avec la main droite

Jouez le rythme inférieur avec la main gauche

Puis reprenez tous les exercices en inversant les doigtés